

The Harbour



🏠 1,381 SQFT

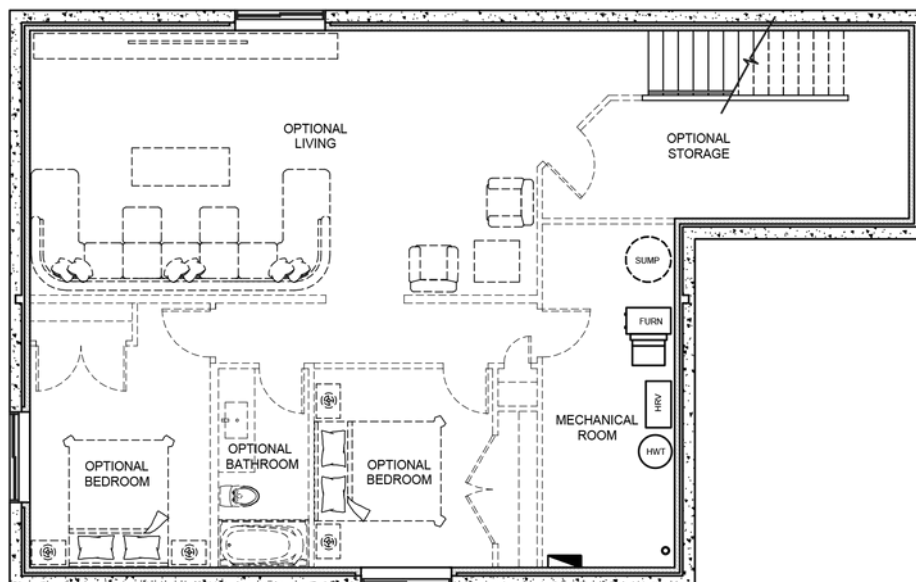
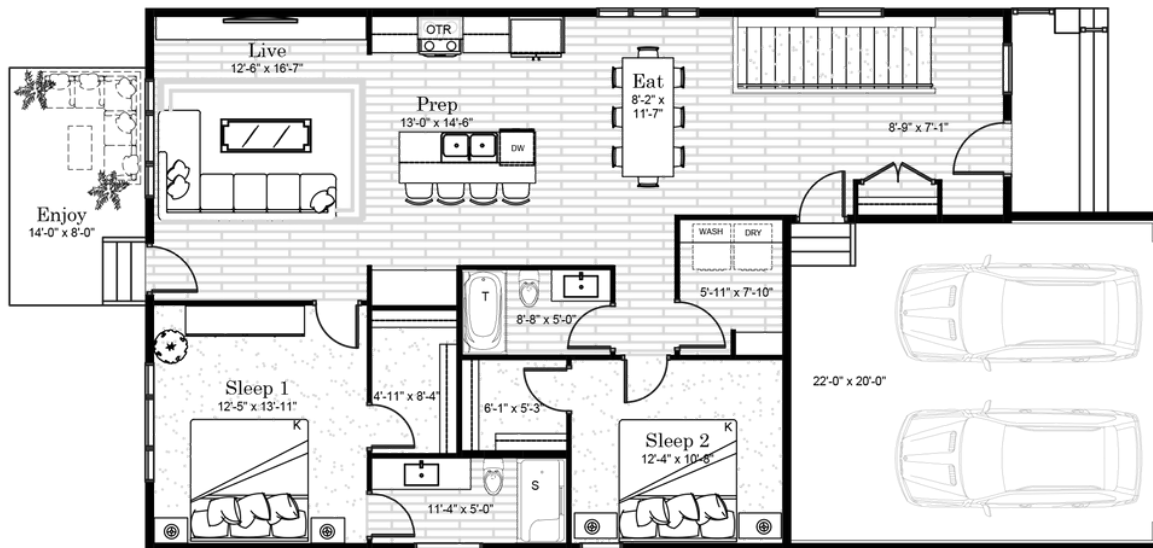
🛏️ 2 Bedroom

🚿 2 Bathroom

5601 PARLIAMENT
— THE BUNGALOWS —

FEATURES:

- Attached Double Garage
- Quartz Countertops
- Primary Ensuite & Walk-In Closet
- 12' x 8' Concrete Patio
- Full Basement with Optional Development
- Fully Landscaped
- 1-2-5-10 New Home Warranty



*The developer reserves the right to change plans, specifications, features, materials, and dimensions without notice in its sole discretion. All renderings, colour schemes, floor plans, maps and displays are artists' conceptions and for illustration purposes only. See sales representative for full details. E&OE.