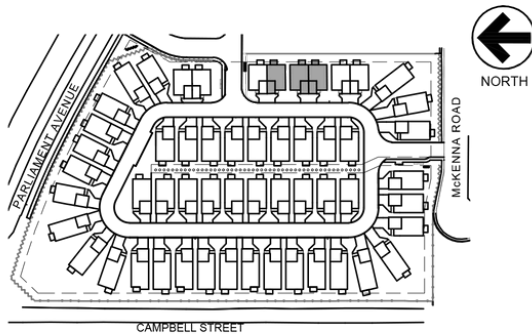


The Campbell I

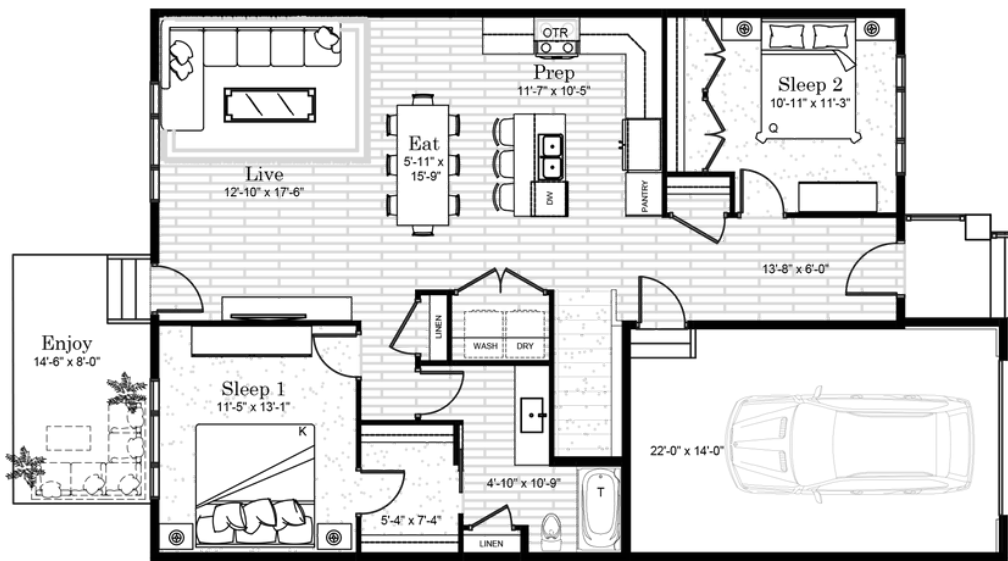
THE BUNGALOWS AT HARBOUR LANDING

🏠 1,195 SQFT 🛏 2 Bedroom 🚿 1 Bathroom

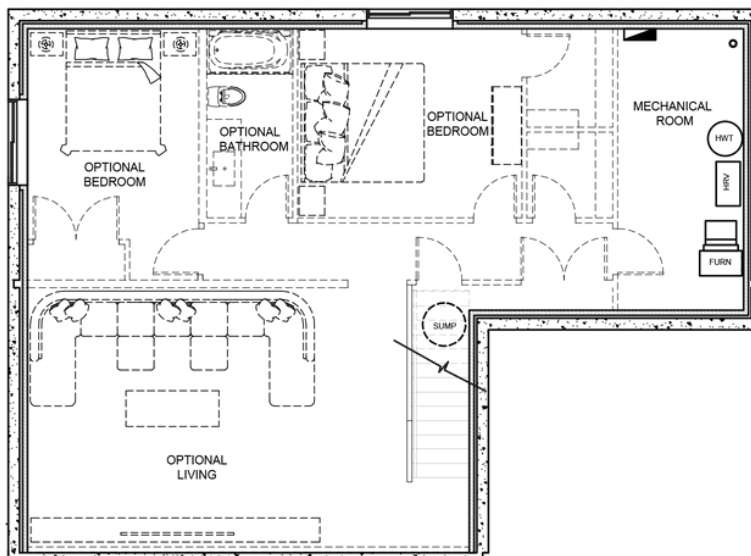


FEATURES:

- Attached Single Garage
- Quartz Countertops
- Primary Walk-In Closet
- 14'-6" x 8' Concrete Patio
- Full Basement with Optional Development
- Fully Landscaped
- 1-2-5-10 New Home Warranty



LOWER LEVEL - OPTIONAL DEVELOPMENT



*The developer reserves the right to change plans, specifications, features, materials, and dimensions without notice in its sole discretion. All renderings, colour schemes, floor plans, maps and displays are artists' conceptions and for illustration purposes only. See sales representative for full details. E&OE.