

The Alton



🏠 1,530 SQFT

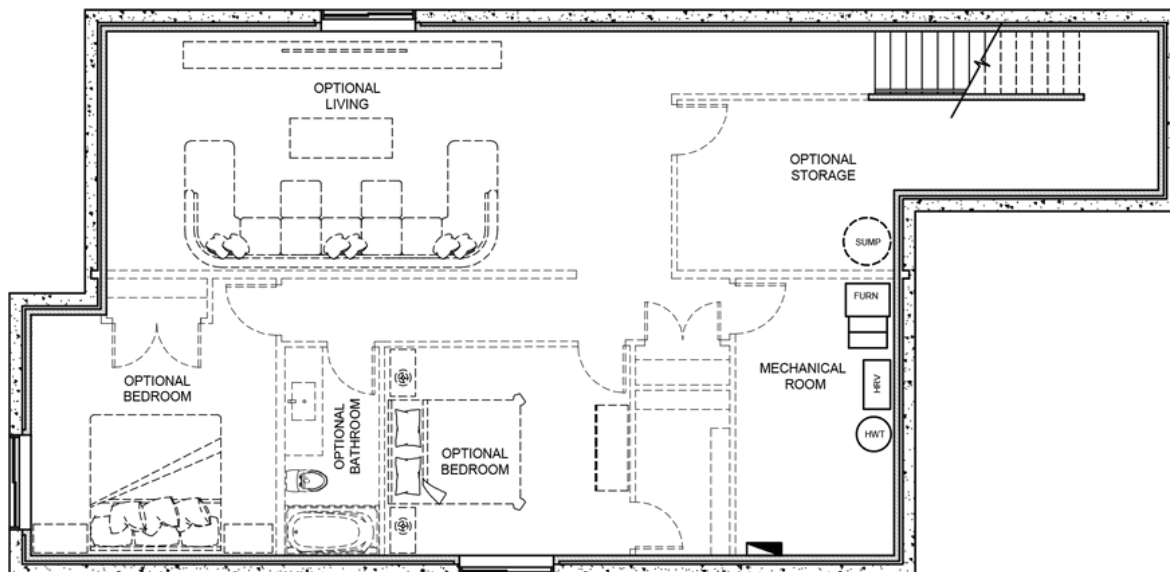
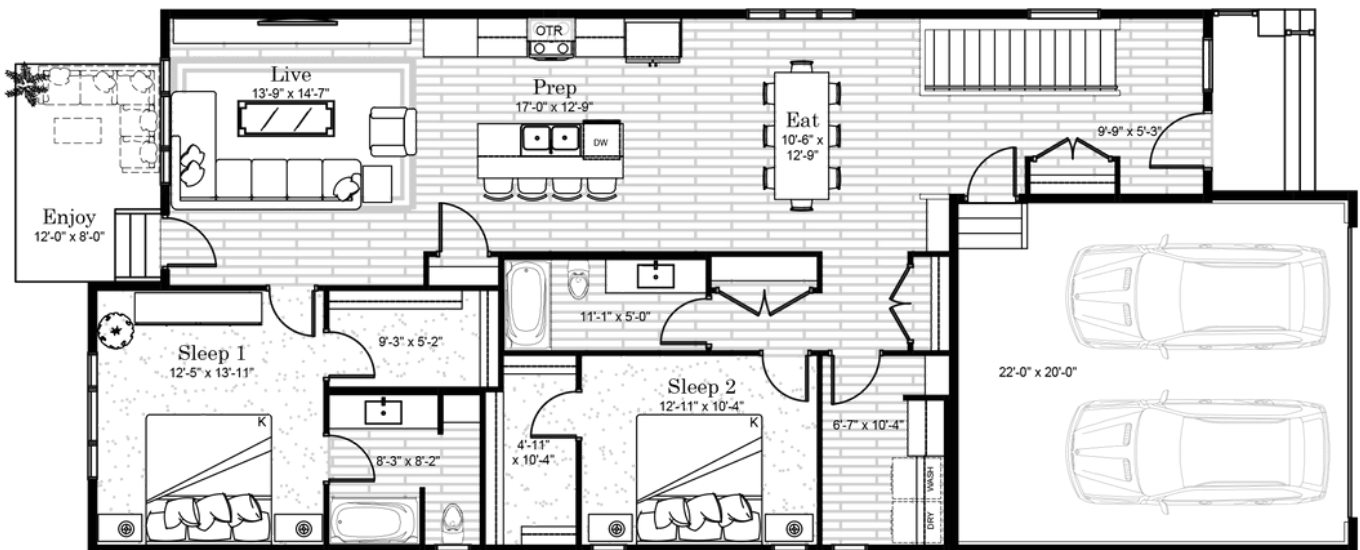
🛏️ 2 Bedroom

🚿 2 Bathroom

5601 PARLIAMENT
THE BUNGALOWS

FEATURES:

- Double Garage
- Laundry Room
- Primary Ensuite & Walk-In Closet
- Attached Double Garage
- 12' x 8' Concrete Patio
- Finished Basement Option



*The developer reserves the right to change plans, specifications, features, materials, and dimensions without notice in its sole discretion. All renderings, colour schemes, floor plans, maps and displays are artists' conceptions and for illustration purposes only. See sales representative for full details. E&OE.